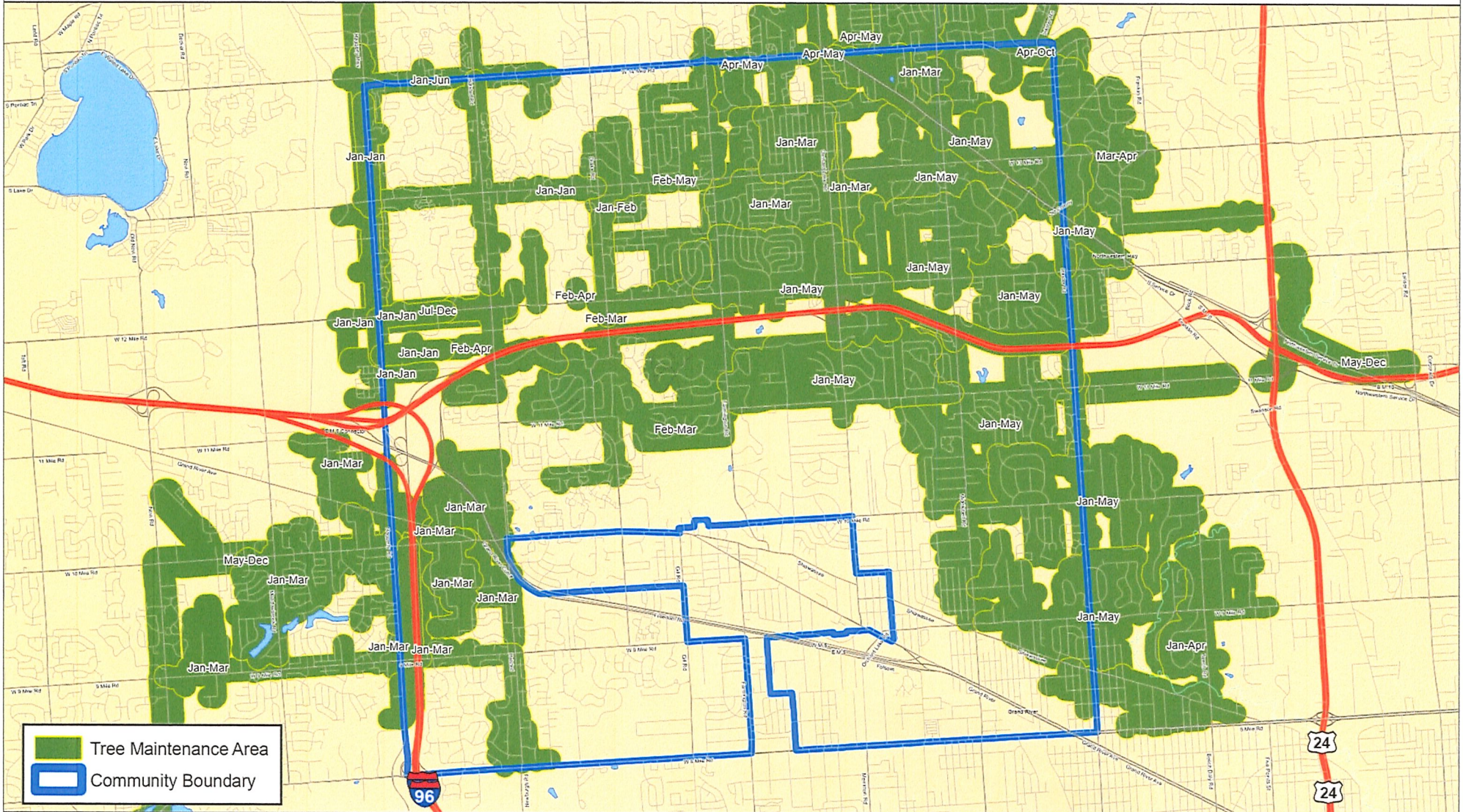




# 2022 Tree Trim Maintenance Program Oakland County - Farmington Hills



- Two-thirds of the time DTE Energy customers spend without power is due to trees.
- Tree trimming is an industry-wide solution to prevent outages. DTE Energy follows industry best practice and standards for tree trimming.
- DTE Energy works collaboratively with customers every step of the way to address their concerns before we begin work.

Please note: During 2022, DTE is planning to trim trees within the area shaded green. Additional tree work may be necessary based on circuit performance to improve reliability. Severe weather, or other circumstances may change the timing and extent of the work





Circuit	2022 Scheduled Miles	Complete	Miles Remaining	Percent Complete	Planning Status	Trees Planned	Density -Trees/Mile	Removal Rate	Refusals
DAVIS8129	2.94	0.00	2.94	0.0%	78%	645	282		
DAVIS8202	9.28	0.00	9.28	0.0%	15%	686	680		
DAVIS8835	5.59	0.00	5.59	0.0%	8%	378	466		
DAVIS9073	25.02	0.00	25.02	0.0%	Not Started				
DREXL8182	0.02	0.00	0.02	0.0%	100%				
DREXL8848	8.75	8.10	0.65	92.6%		4190	479	55%	8
DREXL8957	16.62	0.00	16.62	0.0%	100%	8379	504		49
DREXL8974	4.90	4.35	0.55	88.8%		1914	383	4%	7
DREXL9036	12.30	4.26	8.04	34.6%		5213	425	5%	19
LCSTR9092	9.18	2.91	6.27	31.7%		4755	528	3%	36
QUAKR9231	2.34	0.03	2.31	1.3%		78	35		
QUAKR9233	3.77	3.73	0.04	98.9%		757	205	9%	
QUAKR9234	1.78	1.00	0.78	56.2%		187	105		
QUAKR9235	1.03	0.00	1.03	0.0%	100%	78	76		
QUAKR9236	4.80	4.40	0.40	91.7%		1564	337	1.70%	
QUAKR9237	1.15	0.15	1.00	13.0%		139	121		
QUAKR9939	0.68	0.68	0.00	100.0%		46	46		
RAVIN1665	0.01	3.57	0.01	0.0%	100%	1555	435	16%	9
RAVIN1666	0.19	8.75	0.19	0.0%	100%	4582	523	7%	72
RAVIN1787	0.01	6.70	0.01	0.0%	100%	3382	504	10%	6
RAVIN1796	0.01	4.71	0.01	0.0%	100%	2232	4.72	8%	24
SNSET8196	4.92	0.00	4.92	0.0%	100%	992	199		
SNSET8237	0.06	0.00	0.06	0.0%	100%				
SNSET9016	5.77	0.00	5.77	0.0%	82%	1046	221		
SNSET9021	2.50	0.00	2.50	0.0%	26%	344	521		
SNSET9039	6.28	0.00	6.28	0.0%	Not Started				
SNSET9048	5.81	0.00	5.81	0.0%	7%	95	231		
SNSET9062	2.99	0.00	2.99	0.0%	4%				
SNSET9497	13.80	0.00	13.80	0.0%	Not Started				
SNSET9503	2.37	0.00	2.37	0.0%	81%	213	112		
SOFLD8912	18.00	0.00	18.00	0.0%	39%	2259	320		
SOFLD9010	9.39	0.00	9.39	0.0%	67%	2001	318		
SOFLD9054	8.99	8.75	0.24	97.3%		3061	340	7%	120
SOFLD9057	1.85	1.85	0.00	100.0%		191	103	11%	
SOFLD9082	12.00	0.00	12.00	0.0%	43%	2017	403		18
SOFLD9088	17.68	1.00	16.68	5.7%		6142	361	1%	
SOFLD9094	16.06	0.00	16.06	0.0%	58%	2397	256		
SOFLD9099	8.90	5.26	3.64	59.1%		2221	250	18%	
SOFLD9102	8.45	4.60	3.85	54.4%		2833	333	9%	39
SOFLD9119	12.71	1.53	11.18	12.0%		2629	208	4%	
SRGNT8262	8.42	7.62	0.80	90.5%		5188	422	11%	4
<b>Total</b>	<b>277.32</b>	<b>60.22</b>	<b>217.10</b>			<b>74389</b>			<b>411</b>

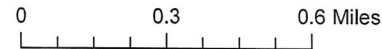
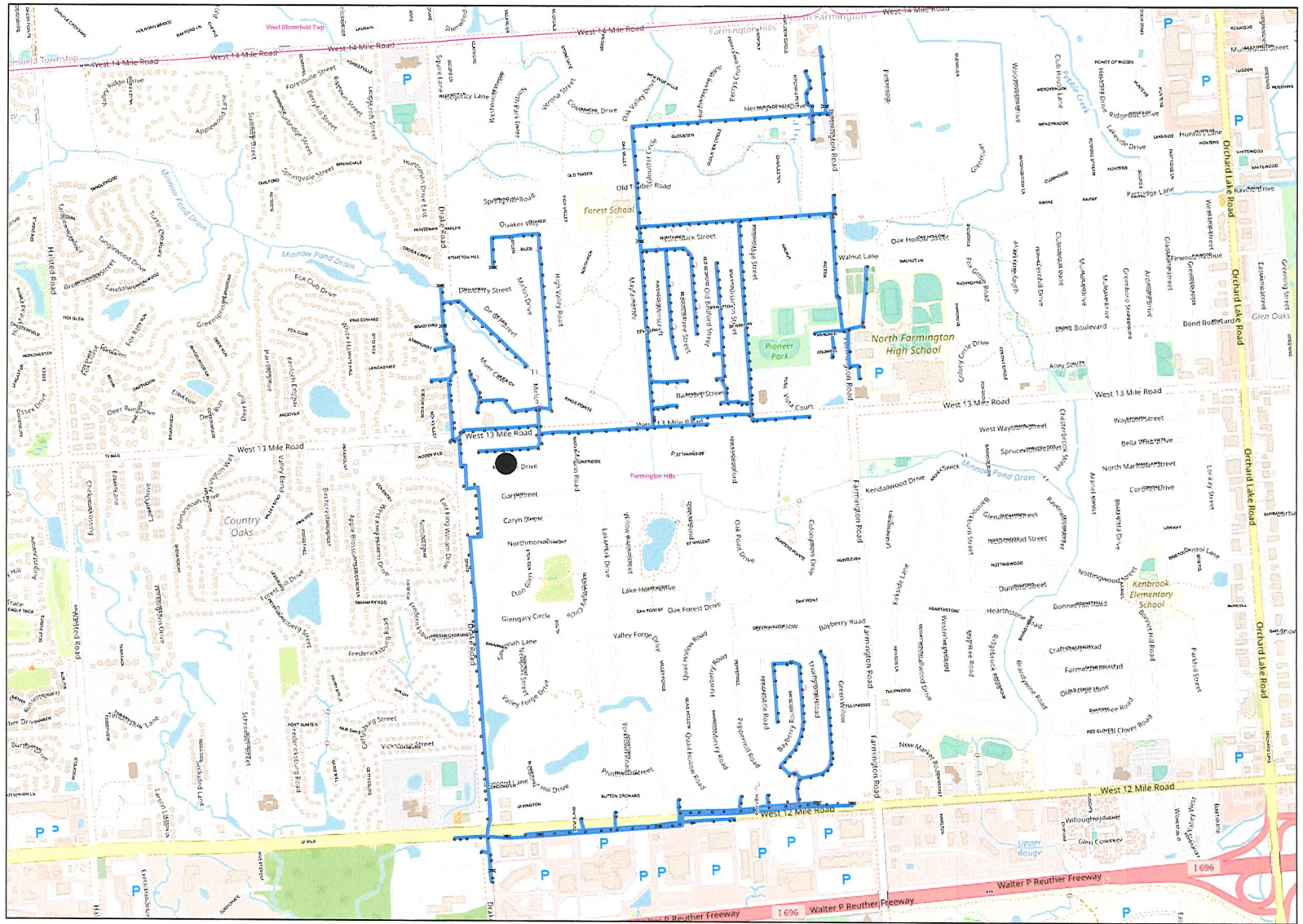
Circuit:  
DREXL9036

Service Center:  
WWS

Miles:  
12.3

### Legend

-  Overhead Circuit
-  Pole
-  Fuse
-  Switch





February 17, 2022

Dear Customer:

Trees are a beautiful and vital part of Michigan's landscape. They're also the leading cause of power outages and can pose a serious public safety hazard if they grow too near or into power lines. That's why our tree experts will be visiting [INSERT PREMISE ADDRESS] and the surrounding area soon to trim and, if necessary, remove trees growing too close to power lines.

Our tree trimming program follows industry standards and uses trimming methods that promote healthy trees and safe, reliable power. All work will be completed by tree professionals who have been trained on safe, proper and environmentally responsible work practices. Get a full view of DTE's tree trimming program at [dteenergy.com/treecare](https://dteenergy.com/treecare).

We are committed to working with you throughout this process and will be here to address any concerns you might have before tree work begins. Here's what you can expect in the upcoming weeks:

- **You may see DTE representatives in your yard or neighborhood inspecting the power lines and trees to determine where trimming is needed. Representatives will be wearing high-visibility vests and carrying DTE ID badges.**
- **If tree work is needed on your property, the representative will knock on your door. If you are not home, we will leave a "Tree Work Scheduled" door card. If you have questions about the work intended for your property, please call the number on the door card. You will have the opportunity to speak to a representative before tree work begins.**
- **If a tree poses a serious hazard to power lines or if trimming will put the tree's health at risk, we may need to remove it. In this case, representatives will leave behind additional information and make considerable attempts to work directly with the property owner before removing any trees.**

We appreciate your support as we work to provide you with safe, reliable and affordable energy.

Questions?

If you have any tree-trimming questions or comments, please call 800.477.4747 to speak with a DTE representative.

Sincerely,

DTE's Tree Trimming Team

***P.S. Thinking about planting a tree?*** Support a safe and reliable energy grid by planting powerline-friendly trees. Get free advice on where and what to plant at [dteenergy.com/treecare](https://dteenergy.com/treecare).



## Tree Work Scheduled

**COVID-19 UPDATE:** At DTE Energy, the safety of our employees and customers remains our top priority. That's why we're working closely with medical experts to implement procedures that will keep our team members, and you, safe as we continue critical work to make sure you have the power you need.

Date: \_\_\_\_\_

DTE customer,

Trees are the leading cause of power outages and can create dangerous safety hazards across the energy grid. To ensure you and your family's safety, we've identified a tree that needs to be trimmed or removed. This will better allow us to deliver safe, reliable energy to you and your neighbors. Here's more info:

- Tree Trimming** - No action is required. More info is included on the back of this piece.
- Tree Removal** - Trees recommended for removal are marked with two white dots near their bases. We would like to discuss this work with you before we begin. *Please read and complete the "Tree Removal Agreement" provided.*
- Other:** \_\_\_\_\_

Our tree-trimming program is aligned with industry best practices, and our team is committed to striking the delicate balance between safe, affordable and reliable energy. There is no charge for this service.

**Questions or concerns?** We're here to help. Contact your DTE representative as soon as possible to ensure we're able to speak with you before work begins:

\_\_\_\_\_  
DTE representative

\_\_\_\_\_  
Phone